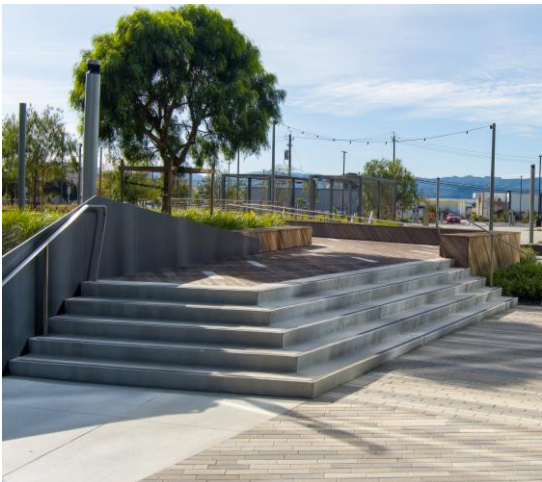


ROBERT A.

# BOTHMAN CONSTRUCTION



## COMPANY PROFILE



**BOTHMAN.COM**  
October 2025

**QUALITY PEOPLE. QUALITY PROJECTS.™**





\$360M+ in negotiated  
work in the past 5 years



Over 99.3% repeat clients



2024 EMR is 0.58



27+ superintendents with  
30.5 years avg. experience



Compliant with all skilled  
workforce legislation



Never assessed liquidated  
damages

ROBERT A.  
**BOTHMAN**  
CONSTRUCTION

**Quality People. Quality Projects.™**



ALTERNATIVE DELIVERY

PRECONSTRUCTION

CONSTRUCTION



## Core Competencies

- State-of-the art Sports and Athletic Facilities
- Educational Facilities
- Site Development and Heavy Engineering
- Structural and Architectural Concrete
- Parks and Recreation
- Streetscape Beautification
- NCAA/IAAF Synthetic Running Tracks
- Playground Construction
- Synthetic Turf and Natural Grass Improvement
- Design-Build Services
- Lease-Leaseback Services



- Laborers
- Operators
- Carpenters
- Cement Masons



- License A
- License B
- License C-8
- License C-27



- California
- Nevada
- Arizona
- Hawaii



- Santa Clara (HQ)
- Roseville
- Tracy
- Hawaii

## CONTACT

Jack Wall

[www.bothman.com](http://www.bothman.com)

408-279-2277

[jwall@bothman.com](mailto:jwall@bothman.com)





## Robert A. Bothman Construction

We are a family owned, full-service Construction and General Engineering Company with 45 years' experience based in the Bay Area. We are headquartered in Santa Clara, California, with satellite offices in Sacramento, CA and on the Big Island, Hawaii.

We offer a full complement of preconstruction and construction services for public, commercial, industrial, and privately owned projects. Our expertise covers a wide range of construction and general engineering specialties, including:

- Athletic & Recreational Construction
- Structural & Architectural Concrete
- Sustainable Development
- Storm-water Management
- Site Development & Heavy Engineering
- Landscape & Irrigation
- Solar Energy Construction
- Pervious Concrete

With our differentiating ability to self-perform the scopes listed above, we can offer Clients and Owners a turnkey solution to their civil projects. Our proven history of on-time delivery and superior quality of construction has allowed us to foster long-term relationships with over 75% of our clients being repeat customers.

Our precise scheduling and self-performing ability ensures proper handling of our resources and complete dedication to each project. With every facet of the Company coming together as one cohesive team, we have been able to complete thousands of successful projects, while never compromising our quality nor professionalism.

We support our staff and reward our field personnel for the pride they take in managing and constructing excellent projects in a safe working environment.

Together we are committed to building projects and making dreams a reality for our clients.

**QUALITY PEOPLE. QUALITY PROJECTS™**



## THE MOST EXPERIENCED ATHLETIC FACILITY CONTRACTOR IN CALIFORNIA

### Unparalleled Experience

Robert A. Bothman, Inc. has completed hundreds of sports facility projects with over 30 million square feet of synthetic surfaces on the ground to date.

### Experience with Alternative Delivery Methods

We have completed dozens of projects utilizing Lease-Leaseback, Design-Build, Design Assist, or other alternative delivery methods. We've found that the proper use of these methods can lead to greater collaboration, in turn resulting in better value, high satisfaction rates, and a higher quality product.

### Industry Knowledge & Existing Relationships

Our existing relationships with all the major turf distributors and field equipment vendors allow us to evaluate each project's intent and customize the materials accordingly. This combined with our extensive knowledge of turf types, field regulations and virtually every aspect of sports-related construction ensures that our clients receive a finished product that is precisely tailored to their needs. A project and facility built to last.

### Working with DSA and other State Agencies

With 45 years of experience in the educational sector, Robert A. Bothman, Inc. understands the importance of working with the DSA and other State Agencies. It is critical to monitor all State Agency requirements and maintain accurate and verified reports to ensure constant compliance. Considering all the new requirements related to air quality, emissions, water conservation, and monitoring; your contractor's experience with this type of reporting is crucial to project success. Bothman's staff is proactive and responsive in ensuring all project participants complete, review and submit all necessary documentation in a timely manner.





“

I would like to acknowledge the professionalism your team demonstrated on the three synthetic turf softball field projects and two synthetic turf stadium projects delivered in 2023. Not all of these construction projects were "straight forward", there were several design changes that needed to be considered due to existing conditions not reflected on the construction documents as well as campus directed changes. Your team offered solid advice supported by cost-benefit analyses allowing the decision-making process much easier. I would not hesitate to recommend Bothman Construction for any projects.

”

**-Charlie Uhlmeyer, Facilities Planning & Engineering Specialist  
Los Rios Community College**

“

The personnel involved in preconstruction and throughout the entire project were professional, informative and enthusiastic about our project. They were mindful of our budget and time constraints yet still paid attention to the details That contributed to the project's overall success. We commend your team for delivering such a high-quality facility in time for our Homecoming game, despite experiencing record-setting winter weather during construction. Delivery of the project through a Lease-Leaseback delivery method has been a resounding success, with this large, complex, and phased project being delivered both on time and under budget.

**- Joshua Jacobson, Facilities Construction Manager  
San Juan Unified School District**

”



“

After a thorough search and review process, the District selected Robert A. Bothman, Inc. to provide the preconstruction and construction services for the two stadium projects. Since Bothman joined our team, they have been true collaborators on the project. They have demonstrated the ability to consistently present design and cost options that are carefully thought through, often including innovative approaches and value-added elements, which have allowed our team to make informed decisions.

”

**- Brett A. Mitchell, Director of Facilities, Construction and Modernization  
San Juan Unified School District**



“

They truly listen to the client's needs and adapt their resources to achieve the goal. They have completed every project on time and on budget. Bothman's on-site construction workers are extremely hard working and dedicated. They are not afraid to put in the extra time to do a first-class job.

- Larry Harper, Founder Good Tidings Foundation



”



“

Bothman was selected for their high- quality work under very tight time constraints and cost effective operations. The team on campus was professional, polite, and flexible enough to deal with some of the challenges that naturally occur during the summer months. They maintained a very clean site, worked within the constraints of the neighborhood, and finished a major project within a mere 10 weeks.

- Jorge Helmer, Chief Financial Officer, Archbishop Mitty High School

”

“

Bothman's experience and expertise has been a tremendous asset to our projects. **The projects we worked on together ranged between 5 million and 10 million dollars and each has been complex for different reasons.** One example is the Helen Diller Civic Center Playgrounds project, a 10-million-dollar renovation in front of San Francisco City Hall over an existing parking structure from 1960. In addition to its high visibility and constant pedestrian traffic, the area is regularly booked for events. To add to the challenges of this project, the design included fully custom play structures that were manufactured and shipped from Germany. **I strongly believe that Bothman is the only contractor we know with the skills to deliver this project successfully.**

- Alejandra Chiesa  
Bay Area Program Director The Trust for Public Land

”

THE  
TRUST  
for  
PUBLIC  
LAND







“

The project turned out spectacular and I only wish we could have had Bothman involved earlier. Bothman proved to be a great partner who provided us with valued engineering on approach, a different perspective on means and method for obstacles, and multiple areas for cost savings. We are proud of the College of Marin Athletic Fields and how it turned out.

**- Saleh Mehraban, Project Engineer, College of Marin Gilbane Building Company**

”

“

For the past 18 years my firm has worked with Bothman on several recreation and sports projects, which include Levi's Stadium, San Jose City College, UC Berkeley, San Mateo Community College District and Peralta Community College District to name a few. I have worked with many contractors over the years, and I find Robert A. Bothman Construction to be a true leader in their industry. If your project requires a strong Team with years of hands-on experience and dedication to excellence, I highly recommend you consider Robert A. Bothman.

**- Anthony Stevenson, Project Engineer Lloyd Civil & Sports Engineering**

”



“

For two years, I worked closely with Robert A. Bothman on the Golden Gate Park Beach Chalet Athletic Fields renovation in San Francisco. Bothman was an outstanding partner, showing integrity, teamwork, and strong commitment. Their excellent pre-planning improved our design and saved money. The construction team stayed on schedule, addressed issues promptly, and handled concerns seriously. Management was equally strong—always available, supportive, and engaged. I strongly recommend Robert A. Bothman for any public athletic facility renovation and would gladly work with them again.

**- Patrick Hannan SF City Fields Foundation**

”



“

The field at Avaya Stadium is the crown jewel of our facility and we couldn't be more pleased with Bothman's work. During construction, we were most impressed with their subject matter expertise and accommodating staff. Their ability to evaluate and articulate the benefits of different project options – from material selections to scheduling impacts or adjustments – was critical in allowing us to make informed decisions.

- Dave Kaval, President San Jose Earthquakes

”



“

During a busy summer when labor was scarce in the Bay Area, Bothman delivered the project on time and under budget. Their team was always accessible, even nights and weekends, provided consistent paperwork and scheduling, made change orders easy, kept us informed on neighbor concerns, and responded to all our questions throughout construction. Robert A. Bothman, Inc. was a pleasure to work with and truly the best contractor I've worked with in 20+ years. I couldn't give them a higher recommendation.

- John Ring, Executive Director, Archbishop Riordan High School The Olympic Club Foundation

”



“

From the beginning of the project, Bothman Construction took on a very proactive approach. They provided me with nearly all of the required submittals prior to the issuance of the Notice to Proceed.

Change Orders due to unforeseen issues were presented in a timely and efficient manner. By doing this, they were able to accelerate their construction schedule considerably. This project was a success due in large part because of Bothman Construction

- John Perrine, Manager-Facilities/Construction  
San Jose Unified School District

”







“

In 2021, when we needed a contractor to replace our athletic field and surrounding infrastructure, Bothman Construction came highly recommended. We were immediately impressed by their professionalism and expertise during bidding and preconstruction. Their pricing was competitive and transparent. Once construction began, the onsite team was skilled, communicative, and great to work with. The project finished on time and on budget, and we're thrilled with the result. I wouldn't hesitate to work with Bothman again and consider them one of the best contractors in the area.

**-Jerry Mullaney, Chief Financial & Operation Officer  
Head-Royce School**

”

“

My most recent project was to build a new turf playing field at Archbishop Riordan High School to replace the one that was installed in 1949. Robert A. Bothman, Inc. performed the work, and it was a great pleasure working with this company – the best contractor that I have worked with in my 20+ years.

**- John Ring, Executive Director Archbishop Riordan High**

”



“

Our stadium at Antioch High School constructed by Bothman construction has been one of the best projects that has happened to Antioch Athletics in the last 20 years.

**- Steve Sanchez, Athletic Director Antioch High School**

”

“

Bothman's quality workmanship, planning, expertise, community awareness, and dedication to a quality project played a major role in its success. The City of Santa Cruz was fortunate to have Robert A. Bothman Construction on the Scott Kennedy Fields reconstruction project.

**- Mauro Garcia, Parks Superintendent & Chris Schneider  
City Engineer City of Santa Cruz**

”





## CLIENT TESTIMONIALS



“

This letter expresses the City of Livermore's gratitude for your company's excellent work constructing the Livermorium Plaza in downtown Livermore. **Your company did an outstanding job during the soil remediation portion of the project working within extremely tight site constraints while keeping traffic and pedestrians safe.** The City was fortunate to have your team meticulously oversee that safety came first at all times. **Your professionalism and attention to detail was the key in keeping this project moving as quickly as possible, even with unexpected requirements directed by the oversight agency.**

- Joel Waxdeck, Assistant City Engineer City of Livermore

”



“

The City of Redwood City had the pleasure of selecting and working with Bothman Construction to build the Magical Bridge Playground at Red Morton Park. This wonderful, challenging, and unique project faced several unexpected obstacles during construction, and **we needed a company that would** navigate these obstacles, **be collaborative in finding solutions, and have the concern and care to see the project through.** Bothman Construction was this type of company. Bothman Construction stands out from the rest because they are community and customer focused, and they never fail to deliver what they promise.

- Chris Beth, Director, Parks, Recreation and Community Services Dept.  
City of Redwood City

”

“

Bothman's experience and expertise has been a tremendous asset to our projects. **The projects we worked on together ranged between 5 million and 10 million dollars and each has been complex for different reasons.** One example is the Helen Diller Civic Center Playgrounds project, a 10-million-dollar renovation in front of San Francisco City Hall over an existing parking structure from 1960. In addition to its high visibility and constant pedestrian traffic, the area is regularly booked for events. To add to the challenges of this project, the design included fully custom play structures that were manufactured and shipped from Germany. **I strongly believe that Bothman is the only contractor we know with the skills to deliver this project successfully.**

- Alejandra Chiesa  
Bay Area Program Director The Trust for Public Land

”

THE  
TRUST  
for  
PUBLIC  
LAND







“

The Robert A. Bothman team came forward to assist when I was leading an inexperienced team of volunteers, joining me on a big dream to build a truly inclusive playground, in Palo Alto. Of course, when our volunteer team gave way to the start of Magical Bridge Foundation and we received a contract to build another playground in Redwood City, **we jumped for joy when our Bothman friends were eager to help bring another Magical Bridge to life and offered the city a most "magical" price to do so.** Right on the heels of this completed project, we were thrilled when Bothman secured the winning bid for our Sunnyvale Magical Bridge project, underway now. **We know we are in the most magical hands, and we can't wait to partner with them again ...and again and again!**

-Olenka Villareal, CEO and Founder Magical Bridge Foundation

”

“

**Bothman's quality workmanship, project planning, expertise, ability to relate to the community and political sensitivities and dedication to producing a quality project, played a huge part in the eventual success of the project.** The City of Santa Cruz was fortunate to have Robert A. Bothman Construction as a part of the Scott Kennedy Fields reconstruction project.

- Mauro Garcia, Parks Superintendent & Chris Schneider,  
City Engineer City of Santa Cruz



”



“

Throughout the process, the Bothman team was organized, professional, collaborative, and enjoyable to work with. The team went above and beyond by graciously working with neighbors to minimize construction impacts and see that their needs were met. **This willingness to work with all stakeholders was key to the project's success.** HARD found Bothman to be an experienced team that is committed to doing a project the right way. **The quality of the work is exceptional. We hope to collaborate on Bothman on future projects and highly recommend them to complement your team.**

- Darcie DeLashmutt, Bond Project Manager  
Hayward Area Recreation & Park District

”



## CLIENT TESTIMONIALS



“

As phase 1 of our long-awaited and very anticipated expansion project is coming to a close and we look around at our amazing new park-like and magical play and learning spaces for our students and school community, we would like to take a moment to thank and appreciate the incredible team at Robert A. Bothman Construction. **This project had multiple hurdles and hoops to navigate through and Bothman helped Serendipity School to surpass each obstacle with the utmost amount of integrity and professionalism.**

- Janet Day, Project Manager Serendipity Elementary School

”



SERENDIPITY SCHOOL

“

Children's Discovery Museum is very appreciative of the professionalism, creativity and problem solving, and timely production schedules that has led to a highly refined product and truly a crown jewel in the downtown San Jose landscape. **Bothman's tremendous collaboration, leadership and excellent project management is directly responsible for this successful outdoor environment project.**

- Rich Turner, Director of Exhibits and Facilities The Children's Discovery Museum of San Jose

”

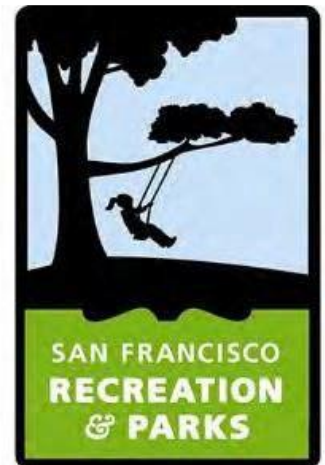


“

It was a pleasure and privilege to have had experience working together with RAB on the Kezar Stadium Renovation in San Francisco, CA. **RAB exudes the highest level of quality and detail to aspects of construction. They have valuable skill sets in concrete construction, civil utility work, irrigation/ landscape and athletic facility construction.** Their Field Superintendent and Project Management Team are second to none. **The RAB Team was able to deliver us a product that we couldn't be prouder of, within the time frame and budget we expected for this momentous athletic field project.** Kezar Stadium has historical significance for San Francisco and is important to the Recreation and Parks Dept. as well as to all members of the San Francisco Community.

- Toks Ajike, Project Manager San Francisco Recreation and Park Dept.

”





## CLIENT TESTIMONIALS



“

Throughout the duration of RAB's services, we found their attention to detail, their continued maintenance, and their overall desire to provide the highest in quality products to be above and beyond our expectations. **We at McCarthy are happy to recommend the services of Robert A. Bothman and look forward to working with the company again.** Please feel free to contact me if you have any questions about the outstanding work performed.

- Keith Vondra, Project Manager, John M. Horner Middle School McCarthy Building Companies, Inc.

”



“

**Quality of workmanship, expertise of trade and scope of work, periodic check-ins and collaboration efforts were top-notch.** Cost request for change orders were met in a timely manner and additional work performed without hesitation. **We could not have had the success we had without the professional team RA Bothman provided to us. We look forward to our next project working alongside Robert A. Bothman, a proven winning team!**

- Leslie Puccio, PM II San Jose Evergreen Community College District

”



SAN JOSÉ · EVERGREEN  
Community College District

“

We appreciate RAB's partnering team spirit. **Not only was this large project completed several months early but it was also successful in maintaining an accident free and safe worksite.** We believe we have developed a strong partnership that we would like to continue with on future projects. It has been our pleasure, and we look forward to future opportunities to work with the RAB team.

- Otto Team, Santana Ranch School Project OTTO Construction

”







“

Robert A. Bothman was instrumental in ensuring that the foundation, floors, sidewalk, and curbs were in perfect condition throughout the entirety of the project. It was your experience in the right mix which allowed us to have the first pervious concrete sidewalk for Whole Foods Market Northern California. Again, the sidewalk was one of the areas that got the greatest comments during the Grand Opening. The customers were very excited that Whole Foods Market would be that proactive with applying such material for our sidewalks.

-Olenka Villareal, CEO and Founder Magical Bridge Foundation

”

“

Bothman has successfully bid several VTA design-bid-build contracts in recent years, ranging from \$3,000,000 to over \$22,000,000. **The largest and most challenging was the Light Rail Transit – Downtown Platforms Retrofit Project, which required raising existing station platforms in Downtown San Jose’s Transit Mall while maintaining light rail service. Bothman delivered a quality project and conducted construction professionally.** Light rail service was maintained, and business disruptions were minimal as Bothman accelerated the schedule and followed work hours to avoid peak business times. A dedicated Community Liaison Officer ensured prompt, accurate communication and responsiveness. **The finished product met and exceeded expectations.**

- Mark S. Robinson, Chief Engineering and Construction Officer  
Santa Clara Valley Transportation Authority

”



“

It was a great experience to work with Robert A Bothman on the Main Building Replacement Phase II project at Mission College. **The crew was diligent in planning and worked through hurdles to address challenges of working on a busy college campus. The proactive approach to safety and quality were impressive. They continuously worked with the design team and identified solutions to various problems.**

- Shaik Sihabuddin, Sr Project Manager Gilbane Building Company

”





# FREMONT HIGH SCHOOL TRACK & FIELD REPLACEMENT

Owner: Fremont Union High School District

Location: Cupertino, CA

Delivery Method: Collaborative Delivery Lease-Leaseback



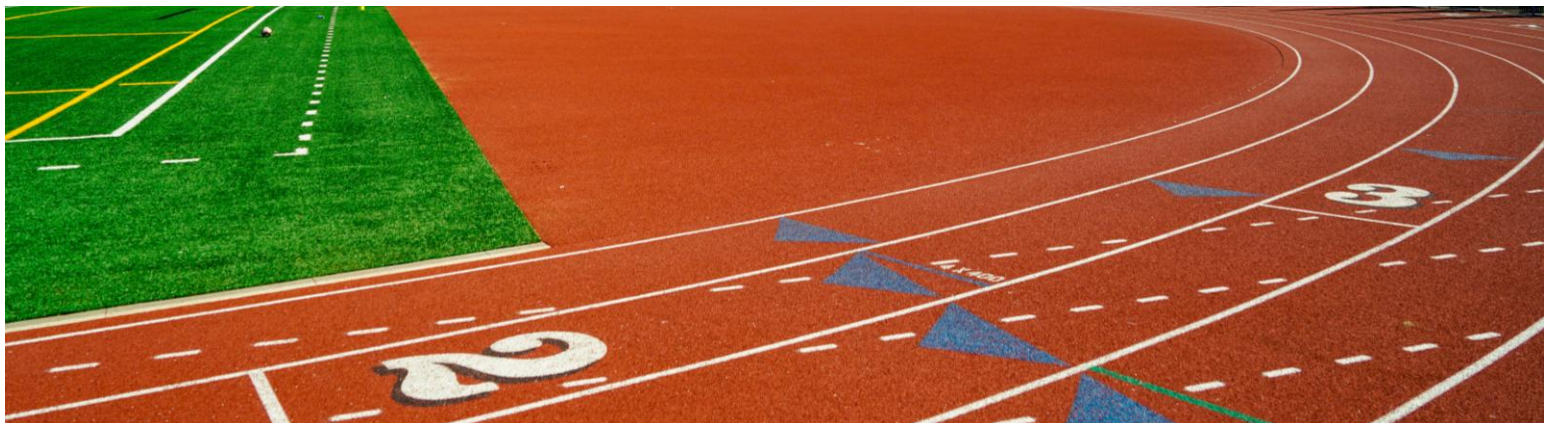
“

**The quality of Bothman’s work is outstanding.** Our completed athletic fields are not only functional and durable but also reflect a high level of craftsmanship and attention to detail. **Bothman delivered exceptional value by balancing cost efficiency with premium materials and workmanship, resulting in facilities that will serve our students and community for years to come.**



- Graham Clark, Superintendent of Schools  
Fremont Union High School District

”





# HOMESTEAD HIGH SCHOOL TRACK & FIELD REPLACEMENT

Owner: Fremont Union High School District

Location: Cupertino, CA

Delivery Method: Collaborative Delivery Lease-Leaseback



“

From the earliest stages of planning through project completion, Bothman Construction has consistently demonstrated exceptional professionalism, technical expertise, and a deep understanding of the unique needs of school districts. **Their strength in the Lease-Leaseback (LLB) delivery method allowed us to benefit from early collaboration, cost transparency, and a streamlined decision-making process that kept our projects on track and within budget.**



- Graham Clark, Superintendent of Schools  
Fremont Union High School District

”





# SYLVANDALE TRACK & FIELD REPLACEMENT

Owner: Franklin-McKinley School District

Location: San Jose, CA

Delivery Method: Qualified Design Bid Build



“

Robert Bothman Construction delivered two exceptional artificial turf fields at Sylvandale and Bridges Middle Schools, meeting tight deadlines and exceeding expectations. **These state-of-the-art fields have transformed our schools and community, giving students in a historically underserved area a safe, high-quality space to play, train, and dream.**



- Lou Anne Castillo-Tran  
Franklin-McKinley School District

”





# BRIDGES TRACK & FIELD REPLACEMENT

Owner: Franklin-McKinley School District

Location: San Jose, CA

Delivery Method: Qualified Design Bid Build



“ Our athletic programs have grown, school pride has soared, and the fields have become a vibrant hub for youth sports and community events. **Robert Bothman Construction** didn't just build fields; they created opportunities, inspired pride, and left a lasting legacy that will benefit our students for generations.



-Lau Anne Castillo-Tran, Director, Maintenance & Auxiliary Services

”



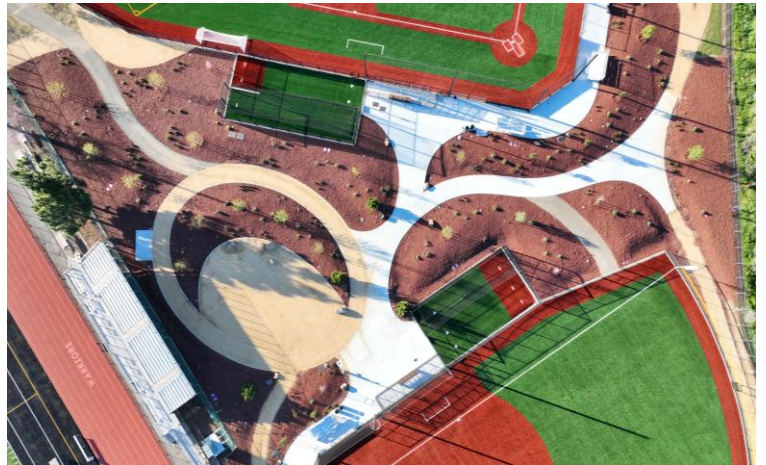


# YERBA BUENA BALL FIELD IMPROVEMENTS

Owner: East Side Union High School District

Location: San Jose, CA

Delivery Method: Collaborative Delivery Design Build





**SILVER CREEK HIGH SCHOOL**  
Owner: East Side Union High School District  
Location: San Jose, CA  
Delivery Method: Collaborative Delivery Lease-Leaseback





# CHAVEZ HIGH SCHOOL ATHLETICS

Owner: Stockton Unified School District

Location: Stockton, CA

Delivery Method: Collaborative Delivery Lease-Leaseback





# HARTNELL COLLEGE PRACTICE FIELD & TRACK

Owner: Hartnell College

Location: Salinas, CA

Delivery Method: Qualified Design Bid Build



“

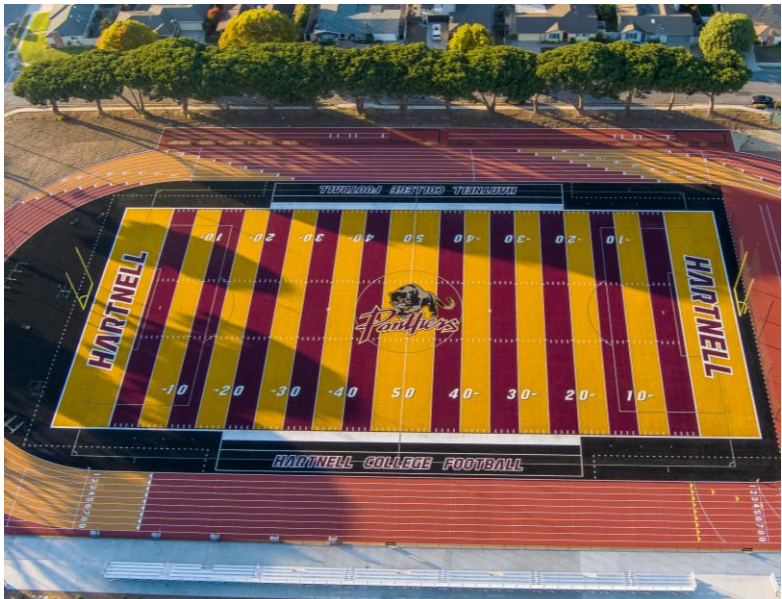
I have worked with Bothman Construction on two major projects at Hartnell College—the renovation of our sod soccer field and the renovation of our track and football field, which included new turf, bleachers, and restrooms. **We experienced no problems, no surprises in cost or scope, and everything was completed on time. They are excellent on follow-up and handle any issues promptly.** Bothman performs quality work, has knowledgeable supervision, and ensures their subcontractors do a good job.



HARTNELLCOLLEGE

- Joseph Reyes, Hartnell College

”





# MOUNT PLEASANT HIGH SCHOOL

Owner: East Side Union High School District

Location: San Jose, CA

Delivery Method: Collaborative Delivery Lease-Leaseback





**EVERGREEN VALLEY HIGH SCHOOL**

Owner: East Side Union High School District  
Location: San Jose, CA  
Delivery Method: Collaborative Delivery Lease-Leaseback



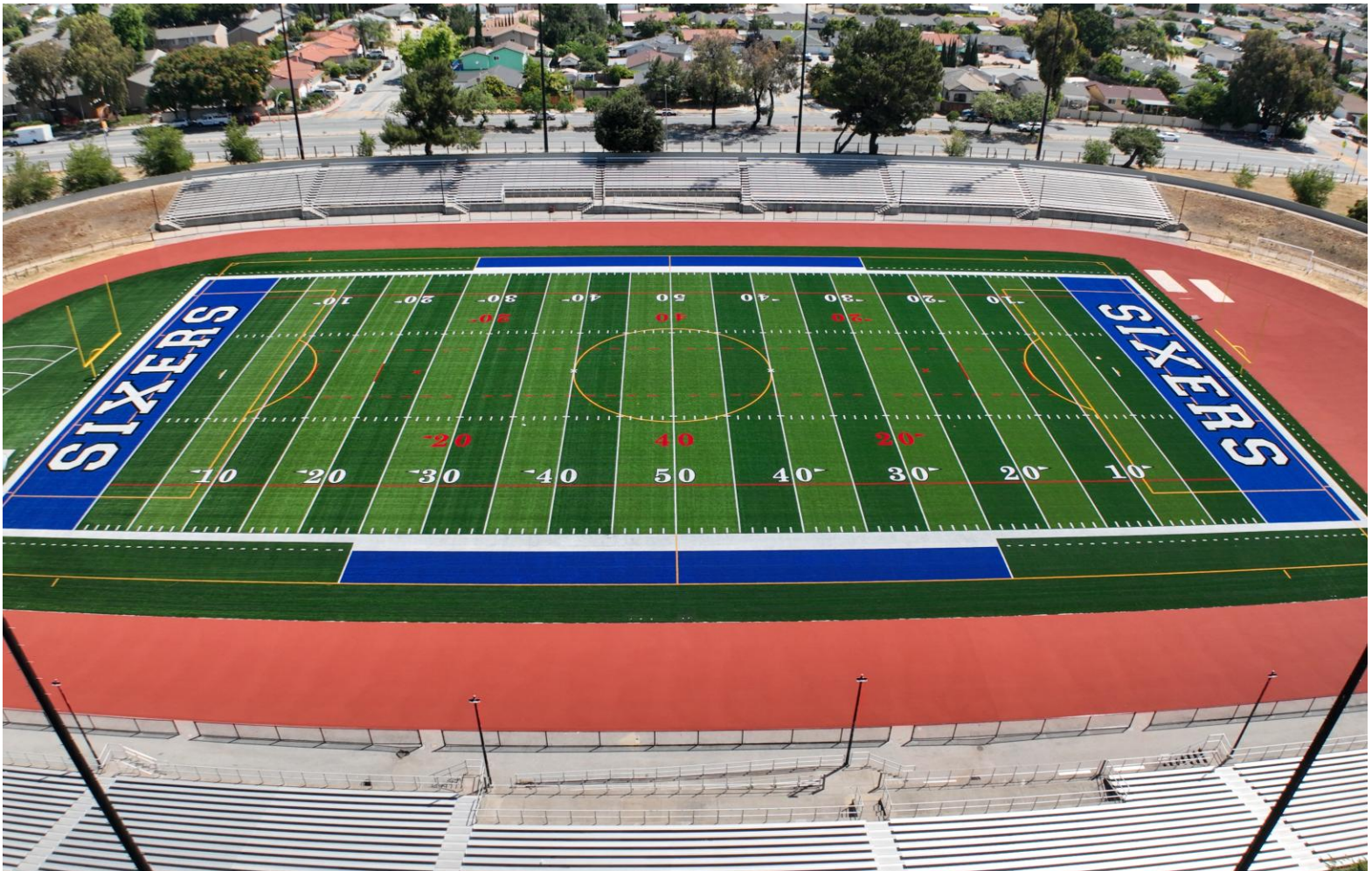
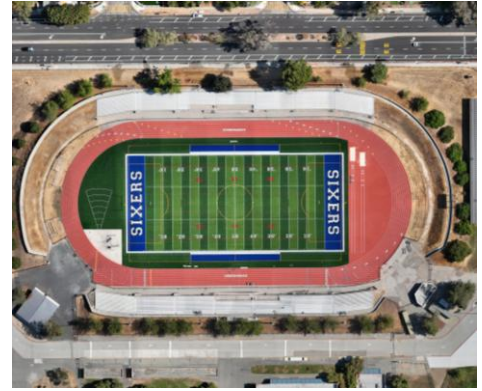


# INDEPENDENCE HIGH SCHOOL

Owner: East Side Union High School District

Location: San Jose, CA

Delivery Method: Collaborative Delivery Lease-Leaseback





# VENTURE ACADEMY

Owner: San Joaquin County Office of Education

Location: Stockton, CA

Delivery Method: Qualified Design Bid Build



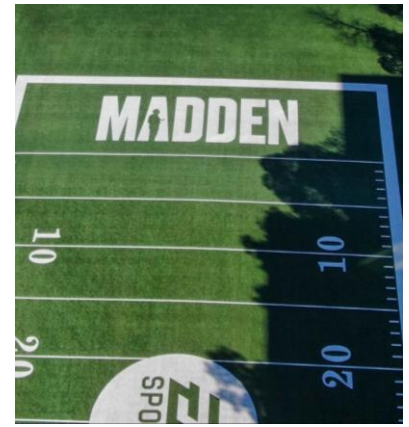


# EA SPORTS – MADDEN FIELDS

Owner: EA Sports

Location: Redwood City, CA

Delivery Method: Private Contract



“

On behalf of Jones Lang Lasalle and our customer Electronic Arts Inc/ EA Sports, **we would like to thank you and your team for the outstanding job that you performed at the Redwood Shores World Headquarters in the honor and memory of the late-great coach and announcer John Madden.** Bothman has officially joined the All-Madden Field Team...BAM !!!!!



JLL - Pat Rogan, Senior Facilities Director

”



# NATOMAS HIGH SCHOOL SPORTS FIELD MODERNIZATION

Owner: Natomas Unified School District

Location: Sacramento, CA

Delivery Method: Collaborative Delivery Lease-Leaseback



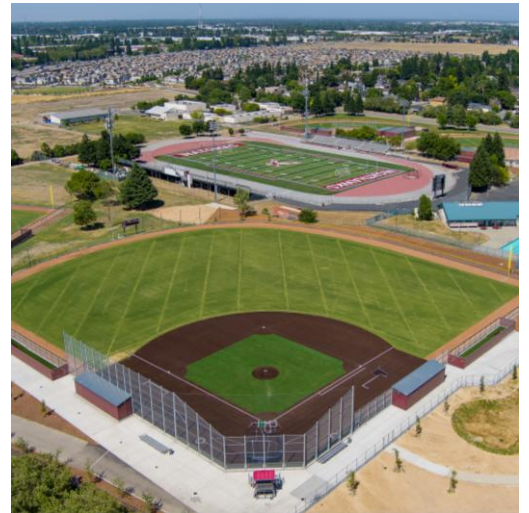
“

From pre-construction all the way to project completion, **RAB team prioritizes the clients' goals to deliver a superior product.** Throughout the collaborative process, the **Bothman team always provided cost saving measures and efficient work processes.** Bothman was also the site work contractor for a project that could have seen significant delays due to an extremely wet winter. **The Bothman team not only kept the project on track, but they also delivered their scope of work early.**

”



- Jennifer Mellor, NUSD





# BRIDGES ACADEMY SCHOOLYARD

Owner: The Trust for Public Land

Location: Oakland, CA

Delivery Method: Qualified Design Bid Build





# ORCHARD SCHOOL DISTRICT FIELD RENOVATION

Owner: Orchard School District

Location: San Jose, CA

Delivery Method: Qualified Design Bid Build





# ORTEGA ELEMENTARY SCHOOL SPORTS FIELD

Owner: Pacifica School District

Location: Pacifica, CA

Delivery Method: Qualified Design Bid Build



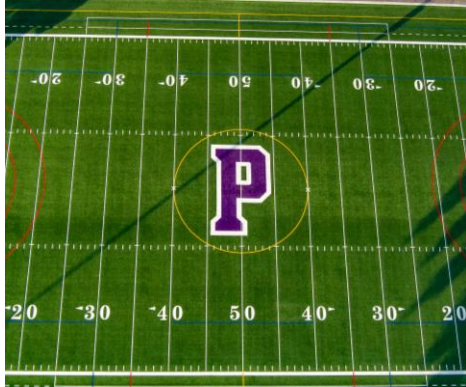


# WITTER FIELD RENOVATION

Owner: Piedmont Unified School District

Location: Piedmont, CA

Delivery Method: Collaborative Delivery Lease-Leaseback



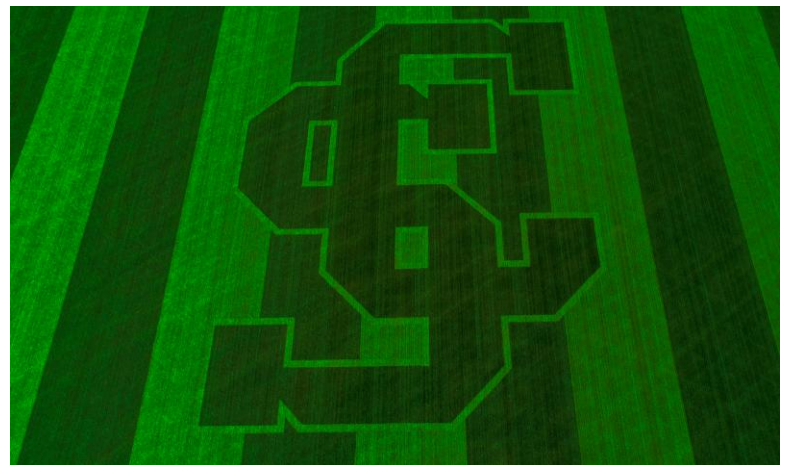
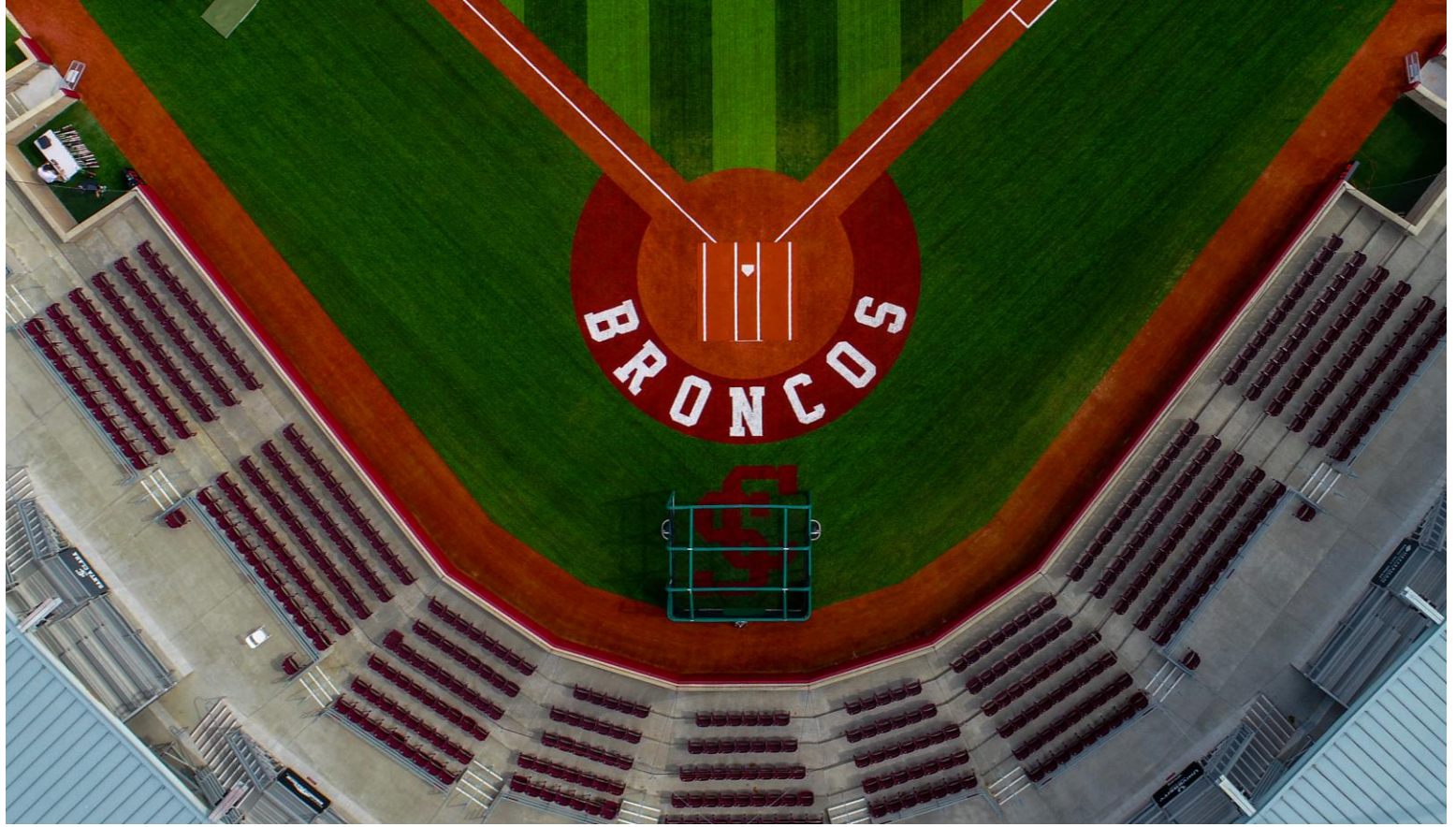


# STEPHEN SCHOTT BASEBALL STADIUM

Owner: Santa Clara University

Location: Santa Clara, CA

Delivery Method: Private Contract



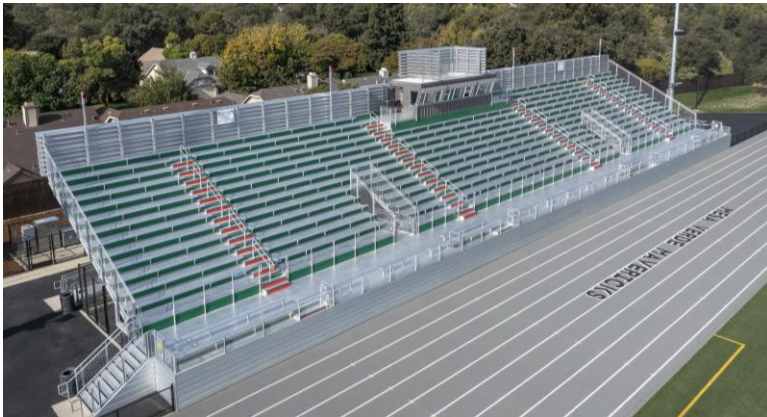


# MESA VERDE HIGH SCHOOL

Owner: San Juan Unified School District

Location: Citrus Heights, CA

Delivery Method: Collaborative Delivery Lease-Leaseback



2024

**Outstanding Facility  
of the Year**



“

Your commitment to excellence, attention to detail, and tireless efforts have truly made a difference in bringing this project to fruition. From the initial planning stages to the final touches, your team has exhibited professionalism and expertise at every step of the way. Your ability to adhere to timelines and budgets while maintaining the highest standards of quality is commendable and greatly appreciated. We are thrilled with the results and are grateful for the lasting impact it will have on our school and community.



- Jennifer Petersen, Principal Mesa Verde High School

”



# SAN JOSE CITY COLLEGE STADIUM RENOVATION

Owner: San Jose Evergreen Community College District

Location: San Jose, CA

Delivery Method: Qualified Design Bid Build





# UC DAVIS PLAYFIELDS PARK

Owner: The Regents of the University of California

Location: Davis, CA

Delivery Method: Negotiated





# ST. FRANCIS HIGH SCHOOL

Owner: St. Francis High School

Location: Watsonville, CA

Delivery Method: Collaborative Delivery Design Build



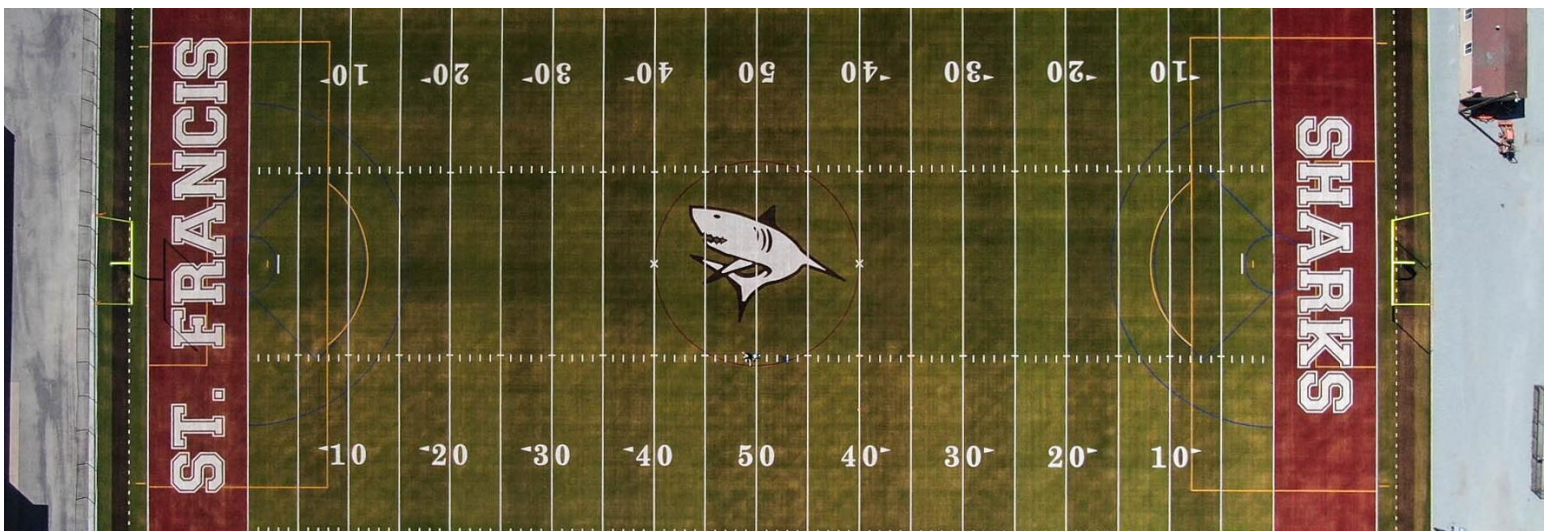
“During the project, your project management team was professional, knowledgeable, and thorough from start to finish. **The Bothman team worked collaboratively with school leadership throughout the project and the project was finished on time and within budget.**

-Patrick Lee, President and Principal St. Francis High School



**ST. FRANCIS HIGH SCHOOL**  
*Salesian College Preparatory*

”





# HEAD-ROYCE SCHOOL ATHLETIC FIELDS

Owner: Head-Royce School

Location: Oakland, CA

Delivery Method: Collaborative Delivery Design Build



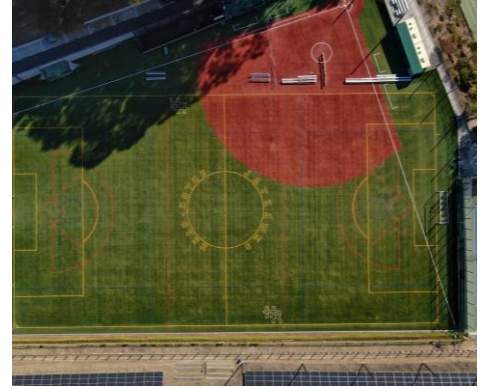
“

When we were looking for a contractor to help us replace our athletic field and surrounding infrastructure (including converting from natural grass to synthetic turf) in 2021, Bothman Construction was recommended as having a proven track record of success with this kind of project. We were immediately impressed with the professionalism and expertise they demonstrated during the bidding and preconstruction process. Their pricing was competitive and transparent. **Once the construction was underway, the onsite team was skilled, communicative and a pleasure to work with.** The project was completed on time and on budget, and we are thrilled with the finished product. **I would not hesitate to work with Bothman again on future projects and consider them to be one of the best contractors in the area.**



Jerry Mullaney, Chief Financial & Operation Officer  
Head-Royce School

”





# LYNBROOK HIGH SCHOOL

Owner: Fremont Union High School District

Location: San Jose, CA

Delivery Method: Collaborative Delivery Lease - Leaseback



“

The District contracted with Bothman using the lease-leaseback delivery method to design and build five lighted stadium complexes with associated practice fields. Bothman totally transformed the athletic facilities for the entire district. **The quality of the design and work at all five campuses was exceptional and the district is now, known for having outstanding athletic facilities.** The quality of their work was excellent, and all of the projects came in on budget. **When it comes to building track, field, and other athletic facilities, no one knows it better or had done more of it than Robert A. Bothman Construction.**



- Christine Mallery, Chief Business Officer

Fremont Union High School District

”



# CUPERTINO HIGH SCHOOL ATHLETIC FACILITIES

Owner: Fremont Union High School District

Location: Cupertino, CA

Delivery Method: Collaborative Delivery Lease-Leaseback



“

The District contracted with Bothman using the lease-leaseback delivery method to design and build five lighted stadium complexes with associated practice fields. Bothman totally transformed the athletic facilities for the entire district. **The quality of the design and work at all five campuses was exceptional and the district is now, known for having outstanding athletic facilities.** The quality of their work was excellent, and all of the projects came in on budget. **When it comes to building track, field, and other athletic facilities, no one knows it better or had done more of it than Robert A. Bothman Construction.**

- Christine Mallery, Chief Business Officer



Fremont Union High School District

”



# FRANKLIN HIGH SCHOOL PH 2

Owner: Stockton Unified School District

Location: Stockton, CA

Delivery Method: Collaborative Delivery Lease-Leaseback





# WEST VALLEY COLLEGE SOFTBALL COMPLEX

Owner: West Valley-Mission Community College District

Location: Saratoga, CA

Delivery Method: Qualified Design Bid Build



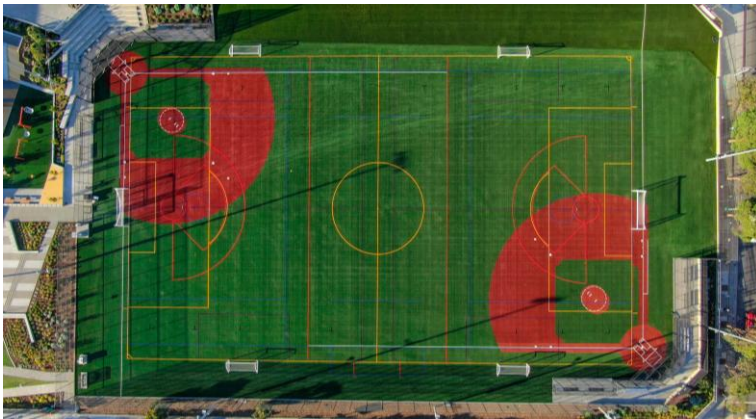


# MARGARET S. HAYWARD PLAYGROUND

Owner: San Francisco Recreation & Parks

Location: San Francisco, CA

Delivery Method: Qualified Design Bid Build



“

I would like to express our appreciation for the work Robert A. Bothman Construction completed at our field facilities at Youngblood Coleman, Silver Terrace and Mission Playgrounds fields in San Francisco. **The quality of the finished work is a testament to your reputation as a quality contractor.** As these projects spanned 2020, the team handled operating during COVID restrictions with excellence.



- Monica Scott, Project Manager San Francisco Parks & recreations

”



# BELMONT SPORTS COMPLEX

Owner: City of Belmont Parks & Recreation Department

Location: Belmont, CA

Delivery Method: Qualified Design Bid Build



“

The Bothman team executed the project with professionalism and an unwavering commitment to delivering a top-quality facility. **The project was a success due to the expertise of the entire Bothman crew, careful construction management, and positive communication among key players.** It was a pleasure to work with RAB construction, and I would not hesitate to work with them in the future.

- Brigitte Shearer, Parks & Recreation Director City of Belmont, Parks & Recreation Department



”



# CHABOT COLLEGE BASEBALL

Owner: Chabot-Las Positas Community College District

Location: Hayward, CA

Delivery Method: Collaborative Delivery Design Build





# ARCHBISHOP RIORDAN HIGH SCHOOL

Owner: Archdiocese of San Francisco

Location: San Francisco, CA

Delivery Method: Collaborative Delivery Design Build



“

My most recent project was to build a new turf playing field at Archbishop Riordan High School to replace the one that was installed in 1949. **Robert A. Bothman, Inc.** performed the work, and it was a great pleasure working with this company – the best contractor that I have worked with in my 20+ years.



- John Ring, Executive Director Archbishop Riordan High

”





# NOVATO HIGH SCHOOL MULTI ATHLETIC FIELDS

Owner: Novato Unified School District

Location: Novato, CA

Delivery Method: Collaborative Delivery Lease - Leaseback



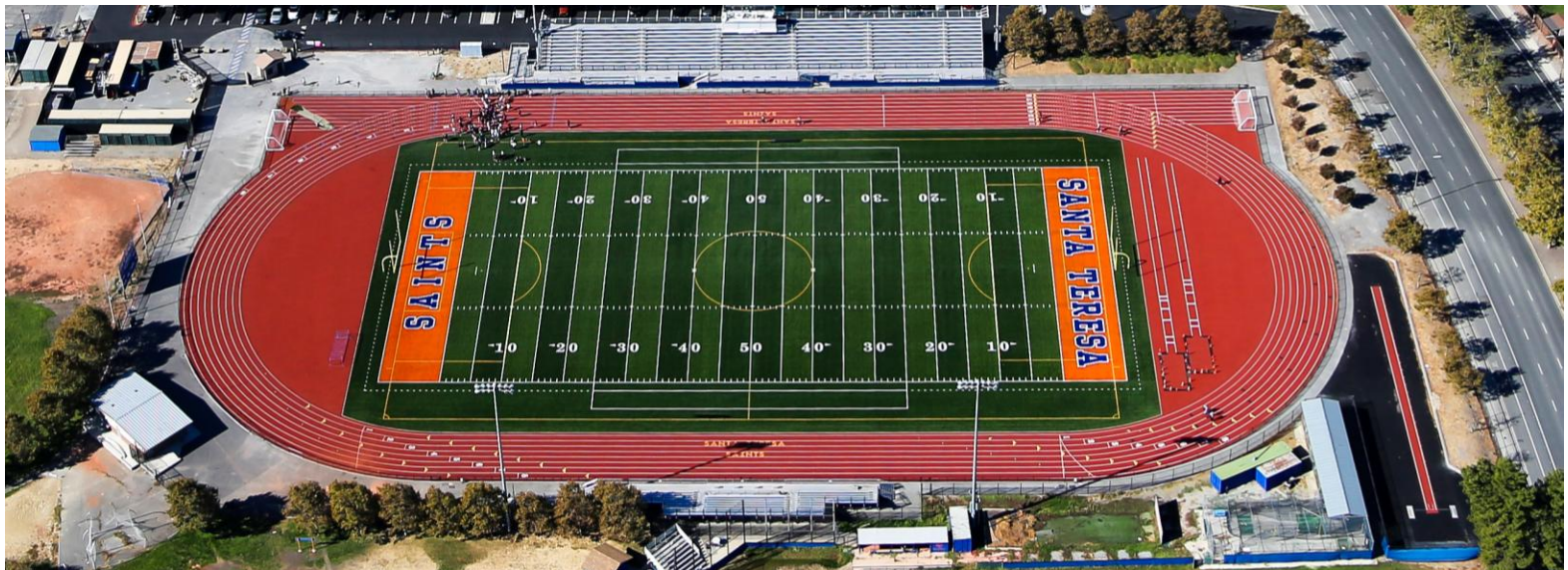


# SANTA TERESA HIGH SCHOOL MULTI FIELDS

Owner: East Side School District

Location: San Jose, CA

Delivery Method: Collaborative Delivery Design Build

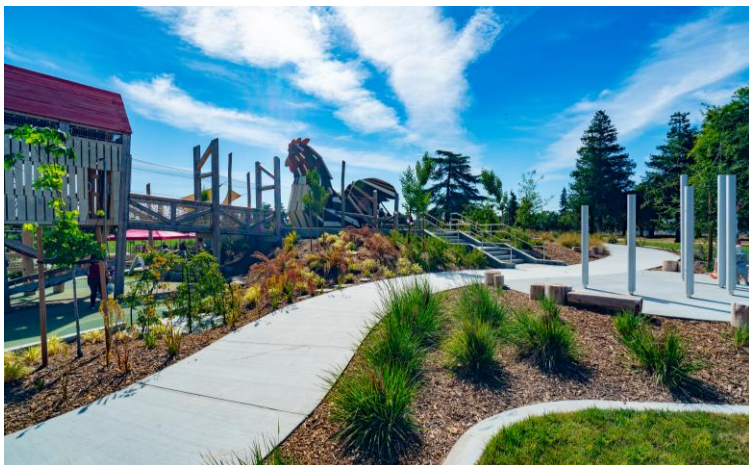




# EMMA PRUSCH FARM PARK

Owner: City of San Jose Department of Public Works

Location: San Jose, CA

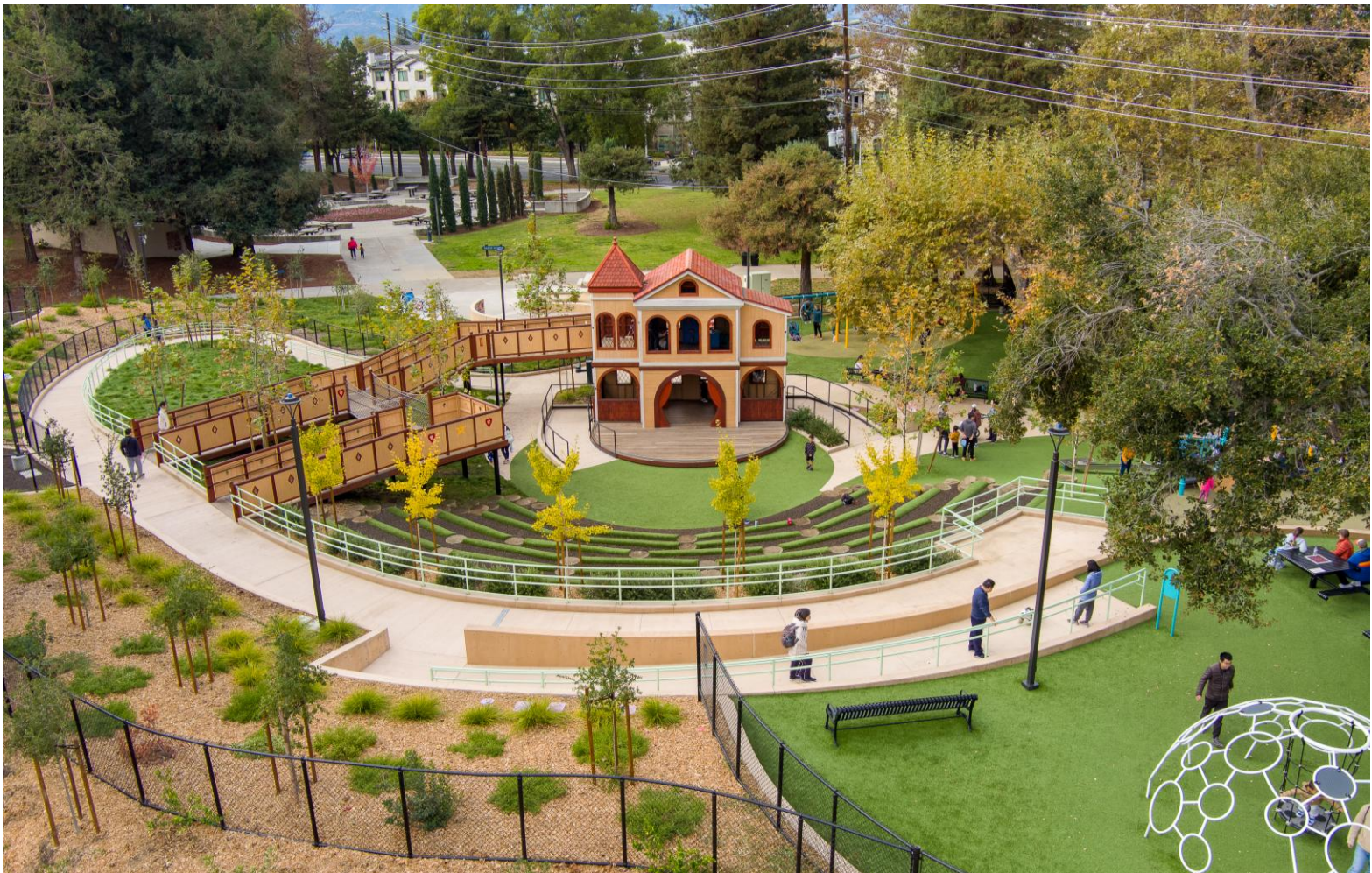




# CENTRAL PARK – MAGICAL BRIDGE FOUNDATION

Owner: Department of Parks and Recreation

Location: Santa Clara, CA

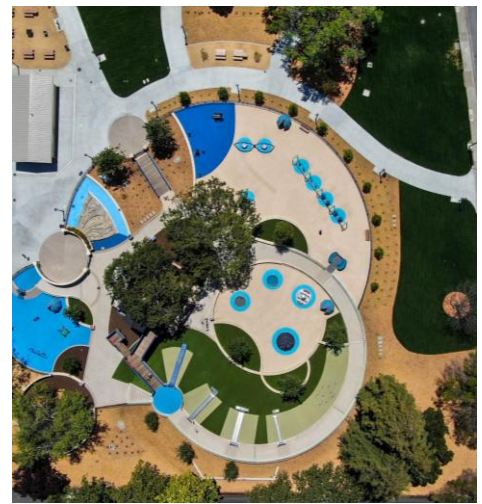
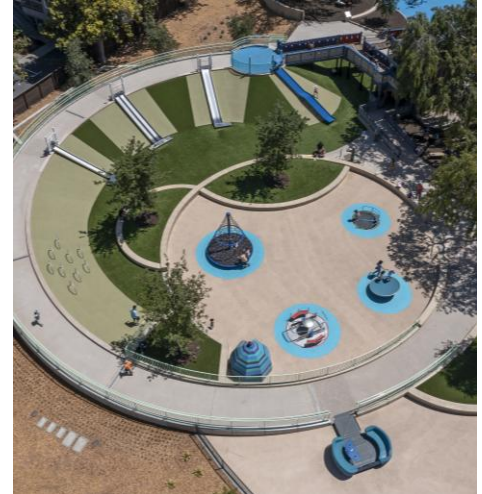




# FAIR OAKS – MAGICAL BRIDGE FOUNDATION

Owner: City of Sunnyvale Department of Public Works

Location: Sunnyvale, CA

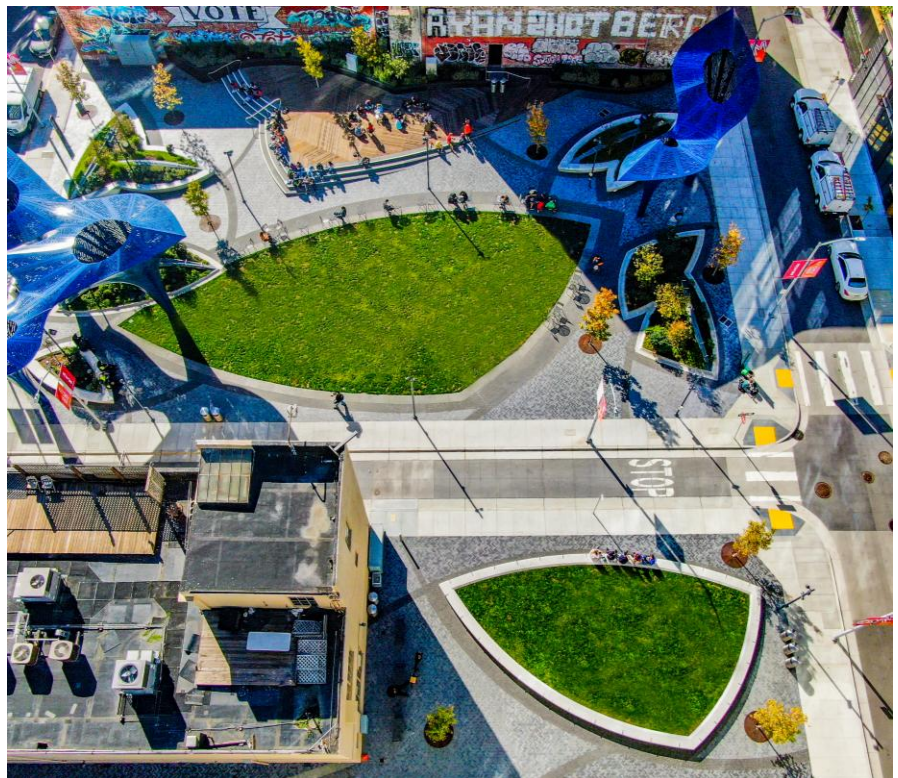
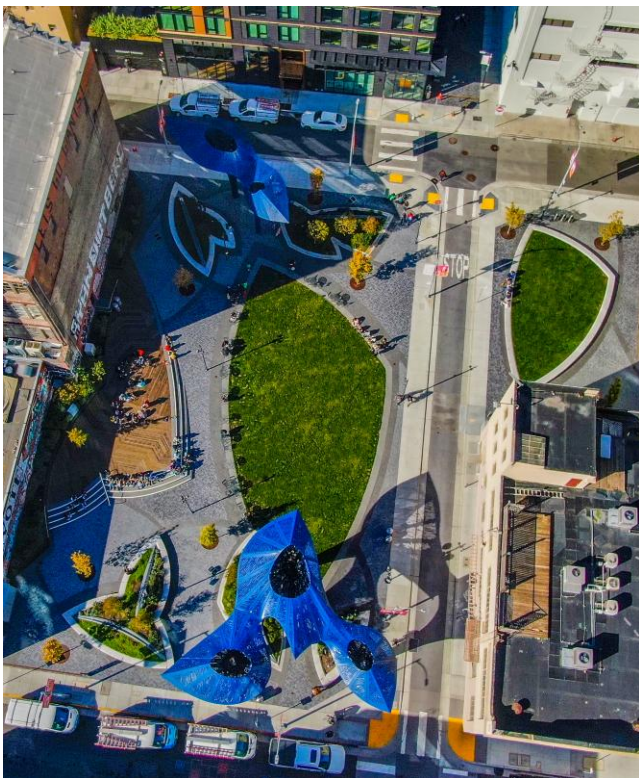




# MARY COURTS

Owner: FC 5M MCM, LLC Brookfield Properties Development

Location: San Francisco, CA





# MONTAGUE PARK

Owner: City of Santa Clara

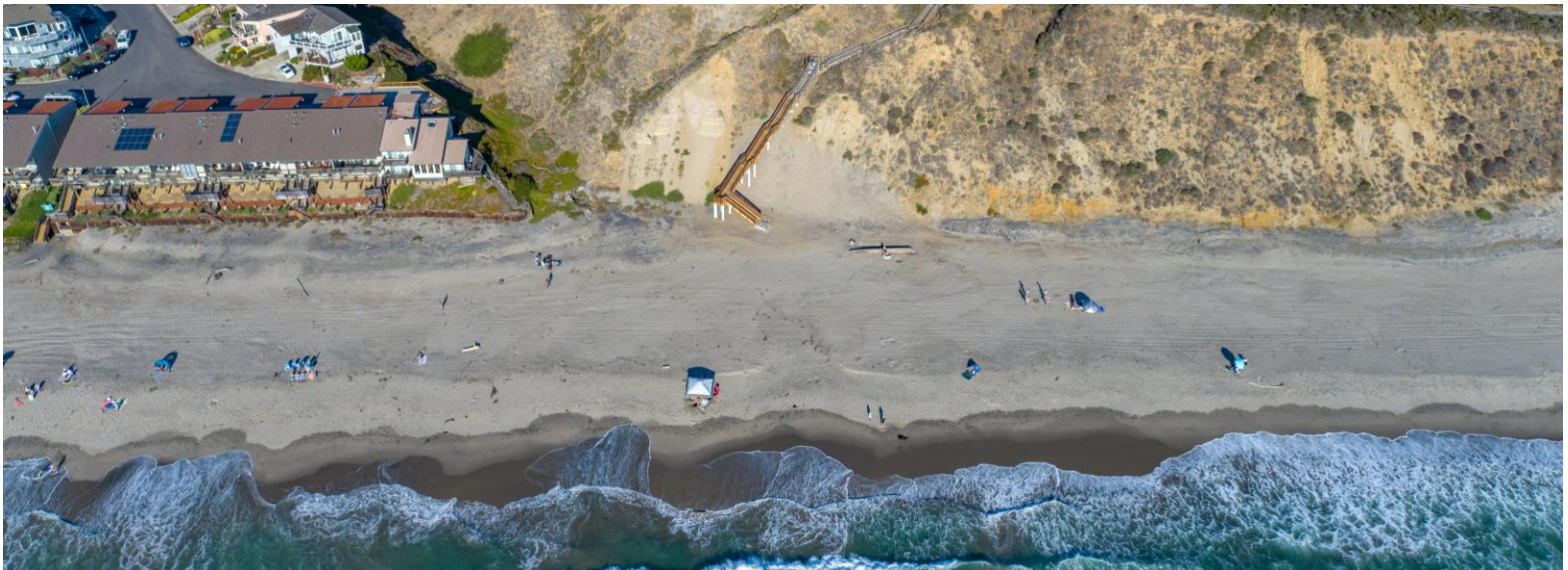
Location: Santa Clara, CA





# MANRESA STATE BEACH UPLANDS

Owner: Department of Parks and Recreation  
Location: Watsonville, CA





# BELMONT SPORTS COMPLEX

Owner: City of Belmont Parks & Recreation Department

Location: Belmont, CA

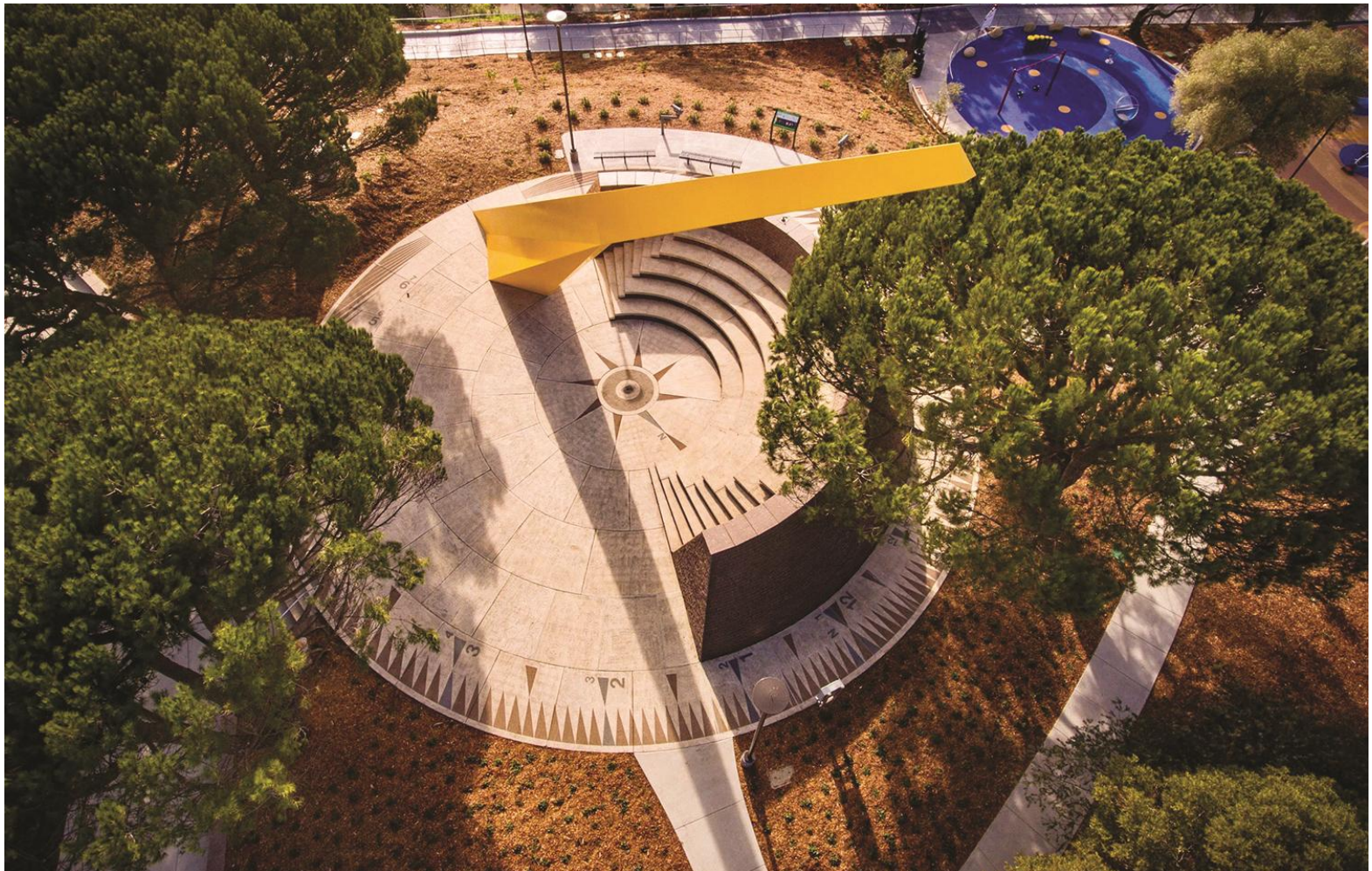




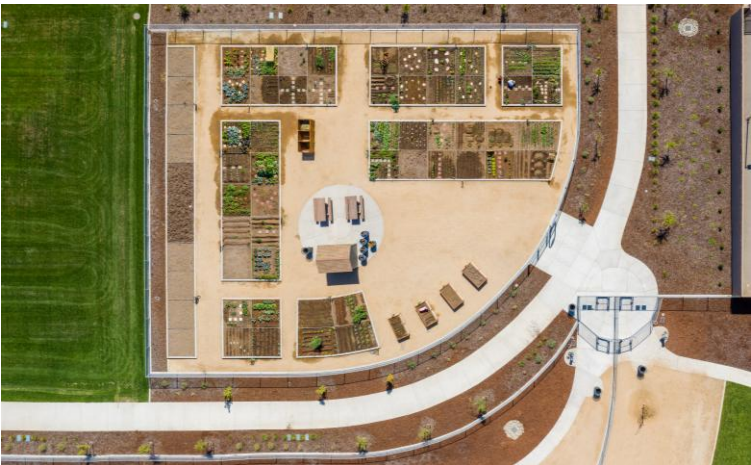
# HILLTOP “SUNDIAL” PARK RENOVATION

Owner: The Trust for Public Land

Location: San Francisco, CA









**CARR LAKE PARK**  
Owner: Big Sur Land Trust  
Location: Salinas, CA

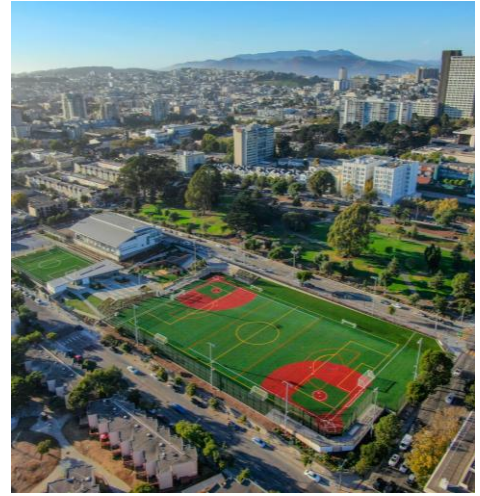




# MARGARET S. HAYWARD PLAYGROUND

Owner: San Francisco Parks and Recreation

Location: San Francisco, CA





# STOCKMEN'S PARK

Owner: City of Livermore  
Location: Livermore, CA





# FAIRMONT TERRACE PARK

Owner: Hayward Area Recreation and Park District

Location: San Leandro, CA





# LIVERMORIUM PLAZA PROJECT

Owner: The City of Livermore

Location: Livermore, CA





# JOHN D. MORGAN PARK

Owner: City of Campbell Public Works Department

Location: Campbell, CA





# THE GREEK THEATRE EXPANSION

Owner: University of California, Berkeley

Location: Berkeley, CA





# VANTAGE CA23

Owner: Vantage

Location: Santa Clara, CA





# SONORA COURTHOUSE

Owner: Sonora Judicial Council of California

Location: Sonora, CA





# SAN MATEO COUNTY OFFICE BUILDING

Owner: City of San Mateo  
Location: Redwood City, CA





**EVERGREEN VALLEY COLLEGE-NORTH FIRE LANE**

Owner: San Jose Evergreen Community College District

Location: San Jose, CA





# GOLDEN WEST MIDDLE SCHOOL EXPANSION

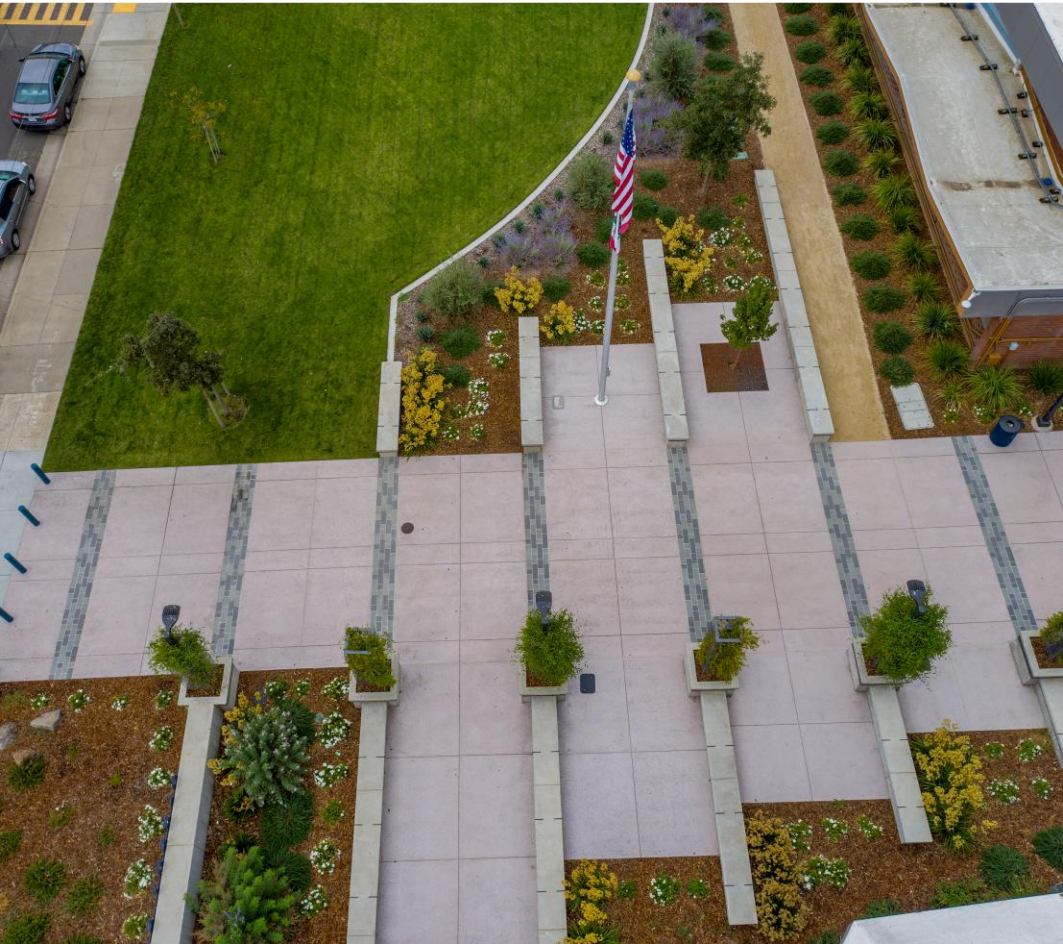
Owner: Travis Unified School District

Location: Fairfield, CA





**ALBERT EINSTEIN MIDDLE SCHOOL**  
Owner: Sacramento City Unified School District  
Location: Sacramento, CA





# APTOS LIBRARY

Owner: City of Aptos

Location: Aptos, CA





# FAIRFIELD HIGH SCHOOL PERFORMING ARTS CENTER

Owner: Fairfield-Suisun Unified School District

Location: Milpitas, CA

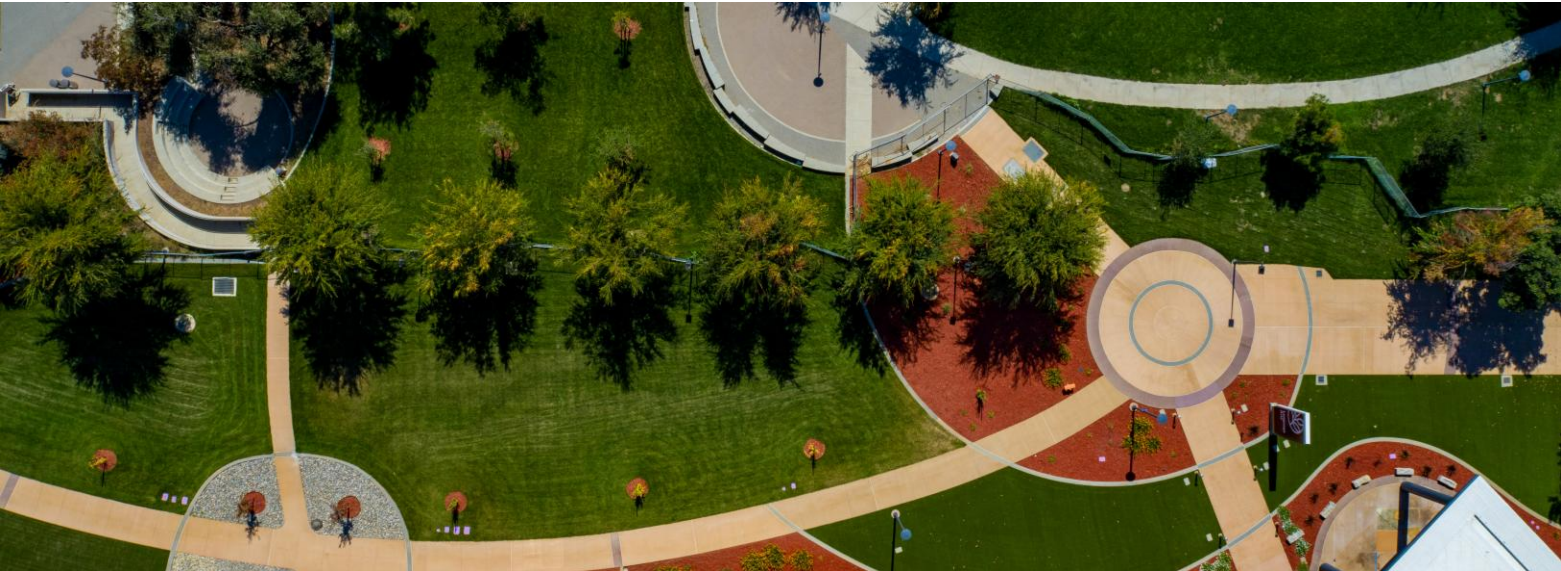




# EVERGREEN VALLEY COLLEGE LANGUAGE ARTS BUILDING

Owner: San Jose Evergreen Community College District

Location: San Jose, CA

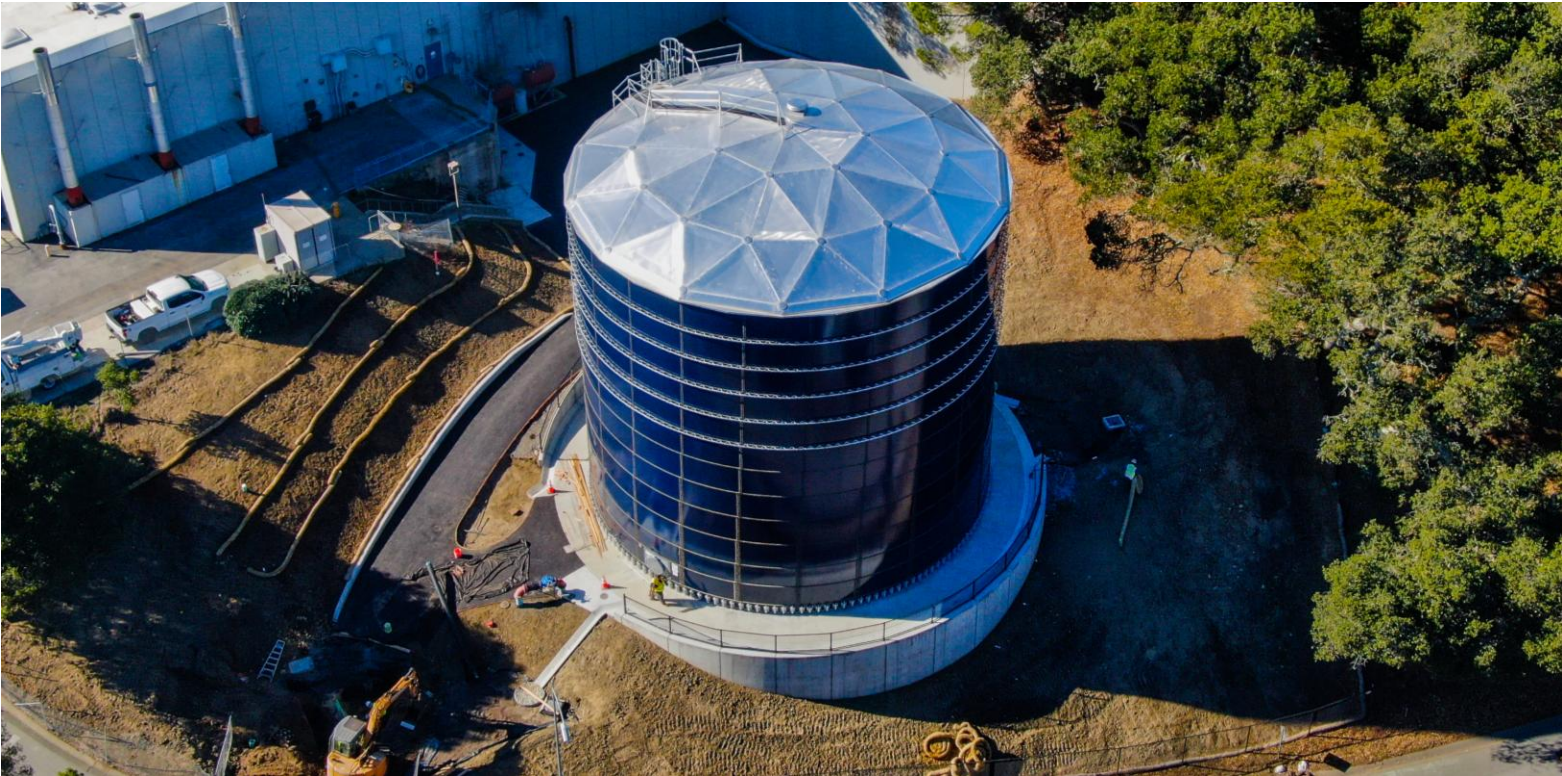




# COLLEGE OF SAN MATEO WATER TANK

Owner: San Mateo County Community College District

Location: San Mateo, CA





# LIVERMORIUM PLAZA PROJECT

Owner: The City of Livermore  
Location: Livermore, CA

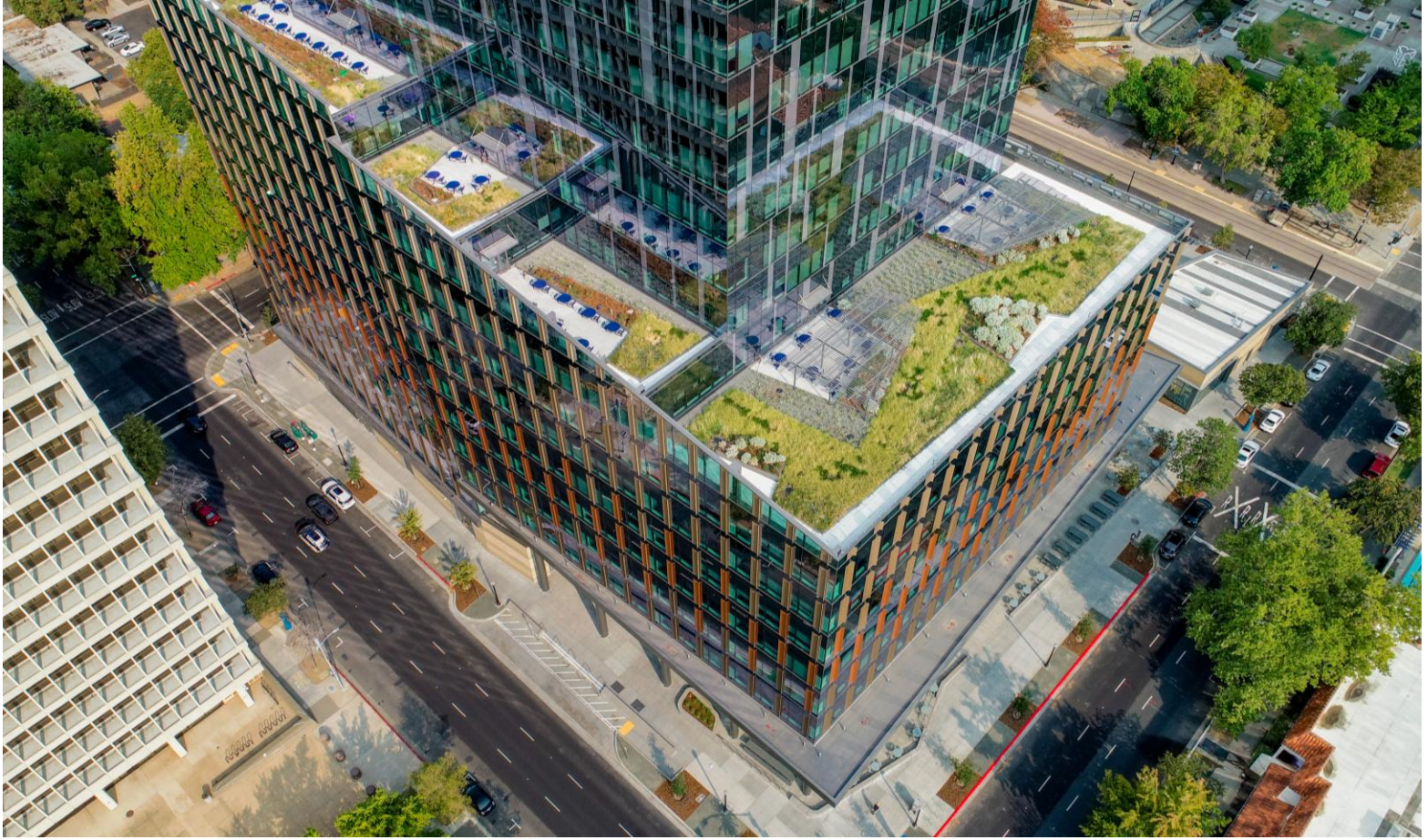




# NATURAL RESOURCES HEADQUARTERS

Owner: State of California

Location: Sacramento, CA





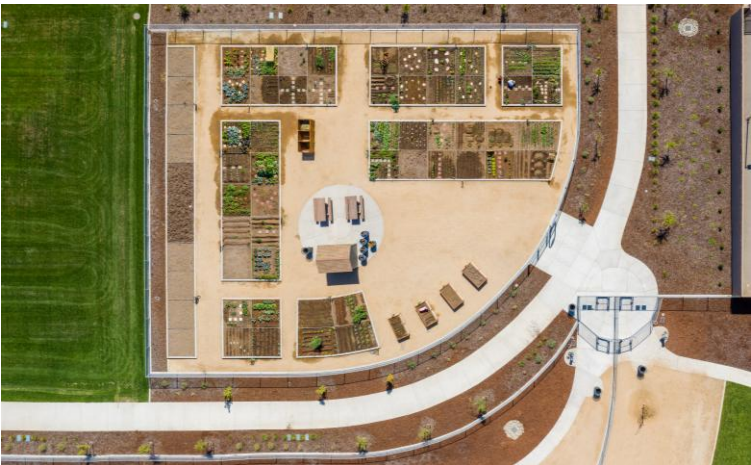
# HILLTOP “SUNDIAL” PARK RENOVATION

Owner: The Trust for Public Land  
Location: San Francisco, CA





**BLACKBIRD PARK**  
Owner: City of Sacramento  
Location: Sacramento, CA





# STOCKMEN'S PARK

Owner: City of Livermore

Location: Livermore, CA





# FAIRMONT TERRACE PARK

Owner: Hayward Area Recreation and Park District  
Location: San Leandro, CA





# JOHN D. MORGAN PARK

Owner: City of Campbell Public Works Department

Location: Campbell, CA

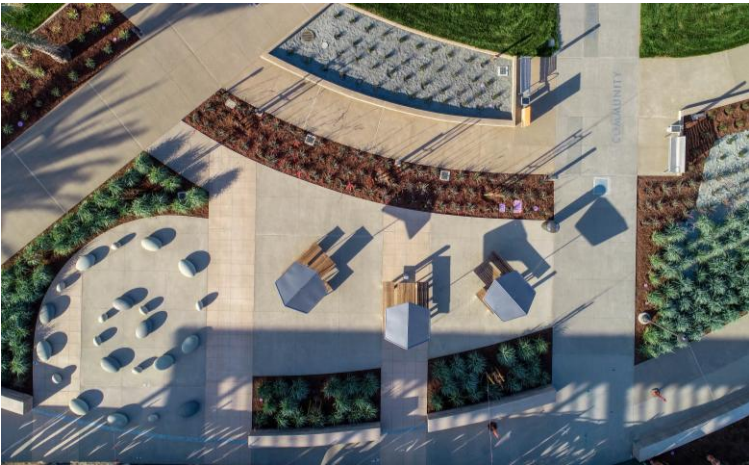




# MISSION COLLEGE INTERDISCIPLINARY PLAZA

Owner: West Valley Mission Community College District

Location: Santa Clara, CA





# WESTMOOR HIGH SCHOOL

Owner: Jefferson Union High School District

Location: Daly City, CA





# CAÑADA COLLEGE KINESIOLOGY & WELLNESS BUILDING

Owner: San Mateo County Community College District

Location: Redwood City, CA





# MIRA LOMA HIGH SCHOOL SCIENCE BUILDING

Owner: San Juan Unified School District

Location: Sacramento, CA





**Robert A. Bothman Construction** is a union company with over 45 years of expertise and more than 33 million square feet of synthetic surfaces installed. The company has a proven track record of delivering high-quality, safe, and sustainable solutions for Professional, Collegiate, K-12, and Municipal Clients. Bothman is here to assist decision-makers (Chief Business Officers, Superintendents, Athletic Directors, Facility Directors, City Planners, and others) in understanding the process and approach to building world-class sports facilities.

**Bothman has the capability to self-perform most trade work, thus ensuring:**



**Budget &  
Cost Control**



**Quality  
of Construction**



**Project  
Schedule**



**Site  
Safety**

## Quality Control Measures

- ♦ **U.S. EPA Draft Method 1633**, finalized in early 2024, for PFAS analysis in soil and surfaces, ensuring safe and environmentally compliant fields.
- ♦ **G-MAX Testing**, per ASTM F355 Procedure A and F1936, measures and ensures impact quality of field and safety for athletes, minimizing injury exposure.
- ♦ Comprehensive **Soils Analysis** to ensure optimal foundation and drainage properties.
- ♦ Use of **Organic Infills**.
- ♦ Implementation of **Life-Cycle Planning** for long-term performance and sustainability.



**SQFT in Total Synthetic  
Turf Projects**



**SQFT in Athletic  
Fields**



**SQFT in Track  
Surfacing**



### Client types include:

- ♦ Professional Sports Organizations
- ♦ Higher Education Institutions
- ♦ K-12 Schools and Districts
- ♦ Municipalities
- ♦ Parks & Rec Departments



### Facility types covered:

- ♦ Football fields
- ♦ Soccer fields
- ♦ Baseball fields
- ♦ Softball fields
- ♦ Multi-use sports fields
- ♦ Cricket fields and more



**SANTA CLARA (HQ)**



**ROSEVILLE**



**TRACY**



**HAWAII**



## Contact Us



### Jack Wall

Business Development Manager

[JWall@bothman.com](mailto:JWall@bothman.com)

408.279.2277

### Brian Bothman

VP, Business Development

[BBothman@bothman.com](mailto:BBothman@bothman.com)

408.279.2277

## Our Locations

### Santa Clara, CA - HQ

2690 Scott Boulevard  
Santa Clara, CA  
95050

T408.279.2277

F408.279.2281

### Roseville, CA

2990 Lava Ridge #195  
Roseville, CA  
95661

T916.671.3486

F916.671.3489

### Tracy, CA

21080 Mountain  
House Pkwy.  
Tracy, CA  
95391

T209.835.9956

F209.835.9554

### Kona, HI

73-4403 Nehiwa Street  
Kailua-Kona HI  
96740

T808.325.2123

F808.325.2857